



源 于 英 国 的 经 典 品 质



# 苏州汉森电梯有限公司

## HANSON LIFT (SUZHOU) CO.,LTD.

地址:中国 江苏常熟东南开发区顺祥路98号

Add: 98 Shunxiang Road, Changshu Southeast Development Zone, Changshu City, Jiangsu Province, China

电话(Tel): +86-512-52300585

传真(Fax): +86-512-52906839

邮编(PC):215500

Http://hansonlift.gicp.net

# HANSON

HS200自动扶梯 · HS300人行道

HS200 Escalator

HS300 Moving Walk

此样本提供的各参数均仅供参考,汉森保留随时更改产品设计和说明的权利,如有更改,恕不另行通知。  
All the information in this catalogue is only for reference. Hanson Elevator reserves the right to alter product design and specification. Specifications subject to change without notice.

2012年4月印刷



## 公司简介 Brief introduction

苏州汉森电梯有限公司是一家引进英国汉森电梯有限公司的品牌和先进技术的电梯企业。公司坚持在引进中创新，不断提升技术含量，努力实现与世界先进技术同步发展，立志为全球提供可信赖的多样化产品。

汉森电梯以市场为导向，以创新为动力，以品质为根本，以服务为保证，做到引进与开发并重，走再创新的发展道路。工厂占地面积逾33500多平方米，其中生产厂房面积逾20000多平方米，先进的电梯检测试验塔高达100米。公司汇集了从事电梯研究多年的高水平、高素质技术人才和管理人才，始终贯彻以顾客为中心的营销理念，不断建立和完善以销售、安装、维保“三位一体”的市场营销运作体制和服务体系，以先进的制造工艺、加工设备，专业的技术支持，确保产品的质量。

汉森电梯面向国际国内市场，努力实现企业管理与国际接轨，朝着生产节能、少污染、低噪声、长寿命、绿色环保电梯方向发展，全力为用户提供质量完美的电梯产品。

Hanson Lift (Suzhou) Co., Ltd. We introduced brand and technology from Hanson Lift (UK) Co., Ltd. We keep innovating and improving. We exert ourselves to make progress and provide reliable multiple products and services.

Hanson stress on keep introducing and developing which based on market orientation and quality and services and driven by innovation. Our plant occupied a floor of 33500 square meters including a 20000 square meters workshop and a 100 meters testing tower. We have many experts in researching and administration. We insist on customer focused principles and improving sales, installation, services system. We use advanced manufacture and equipments and professional support to make sure of high quality of products.

Hanson focuses on both international and domestic market. Try to get the international level on management. We keep improving our products to green products through energy-saving, lowering pollution, lowering noise, increasing product lift. We ensure providing perfect products and services.



## 自动扶梯概述

### Escalator summary

汉森系列自动扶梯和自动人行道采用国际先进的制造技术，符合 GB16899-97《自动扶梯和自动人行道的制造与安装安全规范》等现行标准，具有精巧的结构、精良的踏路、精致的带路、精美的外形，运行平稳、维护方便，给乘客亮丽、舒适的全新感觉，让您领略现代建筑的超凡魅力和豪华气派。

汉森系列自动扶梯及自动人行道适用于商场、超市、地铁、机场、展览馆等客流量大的场所，为您的建筑增添一道亮丽的流动风景线。

Hanson series escalator & moving walk adopt the advanced international technology for its design and manufacture. It meets the standard of GB16899-97 of Safety rules for the construction and installation. It has the features such as exquisite structures, consummate step, smart railing, pleasing outline model, smooth running, easy maintenance etc. It provides vast passengers with a brand-new feel of brightness and coziness. It makes the feelings of the extraordinary and luxury, which is coming from modern architectures.

It's widely applicable in various public places, such as the shopping mall, supermarket, subway, airport, exhibition halls.



## 自动扶梯的优越性能

### Advantageous Performances of Escalator

- 桁架采用铸钢，独特的结构，强度高，防腐处理彻底，效果好，寿命长。
- 整机模块化设计，结构紧凑，通用性强。
- 先进的国际制造工艺及总装工艺，保证了踏路的精准。
- 大直径的铸钢滚轮，运行平稳，噪音更小，寿命加长。
- 人性化的扶手入口保护加装毛刷，更加安全。
- 围裙和内外盖板采用不锈钢更豪华。
- 独创花纹不锈钢前盖板有多种花纹可供选择，美观大方立体感强。
- 超强的CPU主板电脑控制，实时监控运行状况，发现异常及时自动停车，即时自动记录并显示故障代码，降低运行成本。
- 可选用变频调速控制，根据客流量自动控制运行速度，节能效果显著，提高设备的运行寿命，降低运行成本。
- The truss utilizes first class angle steel with unique structure, high strength and complete durable features.
- The overall design is concise and smooth and compatible.
- The advanced international craftsmanship ensures the accuracy of steps.
- The large size diameter of step roller with stable running, low noise and long lifetime.
- The human-oriented handrail entrance is secured by brush.
- The skirt panel, inside and outside of cover plate are made of stainless steel.
- Etched stainless steel from panels are available with various patterns.
- The main board of super CPU monitors the operation in real time, which can automatically stops the running and records the error code in case of any abnormal condition happen.
- VVVF is optional for control running speed to save energy. It can prolong the lifetime and operators cost.



## 自动人行道概述

### Moving Walk summary

汉森系列自动扶梯和自动人行道采用国际先进的制造技术，符合 GB16899-97《自动扶梯和自动人行道的制造与安装安全规范》等现行标准，具有精巧的结构，精良的线路，精致的带路，精致的外型，运行平稳，维修方便，给乘客亮丽、舒适的全新感觉，让您领略现代建筑的超凡魅力和豪华气派。

汉森系列自动扶梯及自动人行道适用于商场、超市、地铁、机场、展览馆等客流量大的场所，为您的建筑增添一道亮丽的流动风景线。



Hanson series escalator & moving walk adopt the advanced international technology for its design and manufacture. It meets the standard of GB16899-97 of Safety rules for the construction and installation. It has the features such as exquisite structure, consummate step, smart railing, pleasing outline model, smooth running, easy maintenance etc. It provides vast passengers with a brand-new feel of brightness and coziness. It makes the feelings of the extra-ordinary and luxury, which is coming from modern architectures.

It is widely applicable in various public places, such as the shopping mall, supermarket, subway, airport, exhibition halls.

## 自动人行道的优越性能

### Advantageous Performances of Moving Walk

- **结构紧凑，应变自如：**短踏板大大缩小了空间跨度，使整机结构更为紧凑，可灵活适应建筑格局，为客户节省宝贵的建筑空间，分水型、倾斜型的产品规划系列，可使客户依其布局构想自由选择。
- **符合质量/安全标准：**短踏板表面的防滑槽设计，具备良好的防滑性能，使乘客安全舒适。依设计成的倾斜角度，可使货物手推车便自如地进出自动人行道。专用主机，安全保护功能齐全，运行平稳，驱动效率高，先进的微机控制系统能全面监控自动人行道的运行状态，及时的消除运行隐患，减少维护时间。
- **稳定可靠的投资：**短踏板与传送链直接相连，自动人行道运行更为宁静平稳，整机的使用周期得以大大延长，产品维护也更加方便，特别设计的大橡胶扶手驱动，运行噪音低，驱动力大，改善了扶手运行条件，使扶手带的使用寿命更长，独特的矩形方囊结构具有强大的负载能力，极大地提高了整机运行的稳定性，延长了产品的使用寿命。
- **缤纷多彩的装饰效果：**扶手带款式多样，可满足不同环境的个性化需求，冲压花纹前盖板，美观大方，更具立体感。内外盖板采用高质量不锈钢。
- **无可比拟的经济性：**自动人行道充分运用先进的制造工艺，大大提高了产品的性能，延长了整机的使用周期，直接的效果就是减少了客户的营运成本，可选用的变频驱动技术，节能效果显著，最大程度上降低整机的运行成本。



#### ○ Compact structure ease strain

Short pallets can greatly reduce space span, which can flexibly fit the building structure and save the construction space. It comprises H version(horizontal)1 version (inclined) and C version(compact) can let the customer have a free choice on his original layout.

#### ○ Conform to quality / safety standard

Slip-free grooves on pallet surface have an excellent slip-proof function which makes the ride safe and comfortable. Slightly inclined combts can make trolleys easily get on anvoyors. Hanson traction machine with complete protecting function runs smoothly and drives efficiently. Advanced microcomputer controlling system can fully monitor the running status of the moving walk.

#### ○ Stable and reliable investment

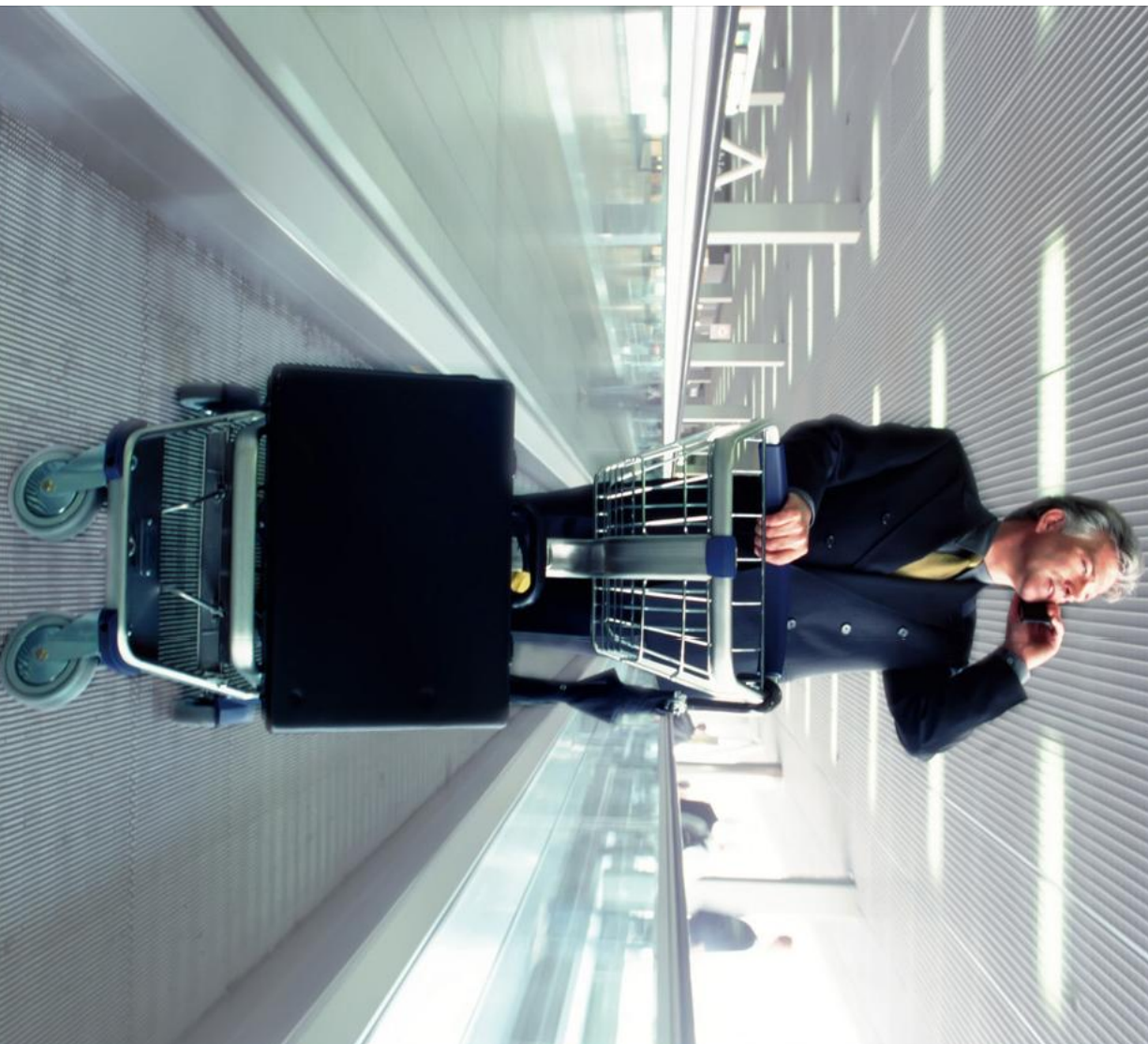
The pallet directly connecting with the chain which makes the running more smoothly and quietly, thus the service life is extended and its maintenance can be easily conducted. Special designed big wheel handrail drive runs in low noise and big power which improves the running condition of handrails. life is hence prolonged. Unique angleiron structure has a big load capacity which greatly improves the overall stability and service life.

#### ○ Colorful decoration

Various styled handrail can meet personal demand in different environments. Beautiful stainless steel floor plate has a three-dimension effect. Inner and outer cover plate adopts stainless.

#### ○ Incomparable economical

The moving walk fully utilizes advanced manufacturing process, greatly improves product performance and service life, the most direct effect is that the operation cost of the customer is reduced. The optional VVVF drive technology yields great energy-saving, reducing the running cost to the maximum.



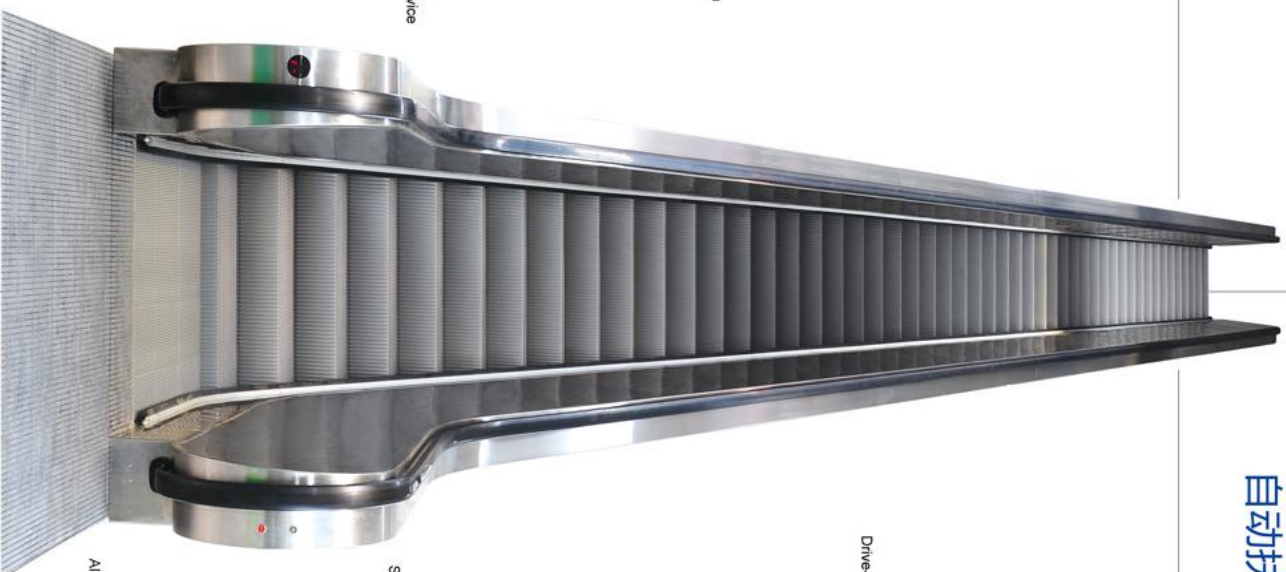
# Illustration of Escalator Main Parts

## 自动扶梯各部分图解



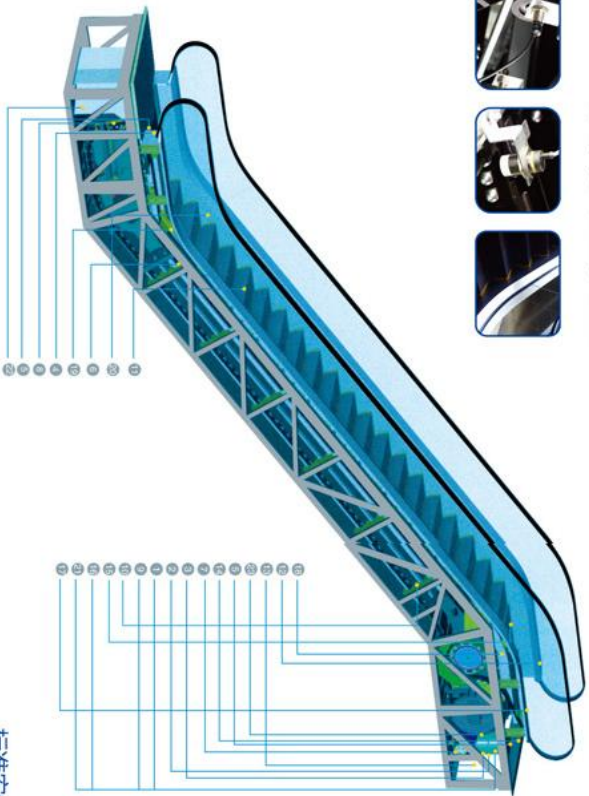
# Escalator Safety Parts

## 自动扶梯安全部件



# Safety devices of HS200 Escalator

## HS200扶梯安全装置



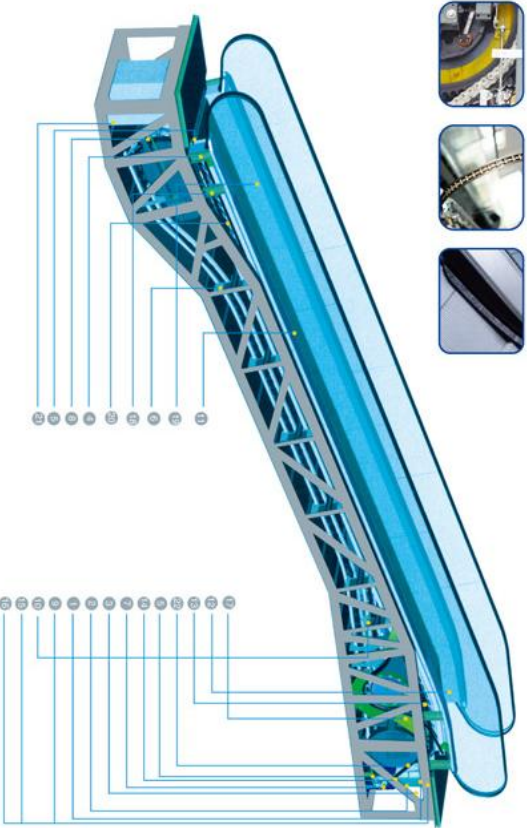
标准安全装置  
Standard safety device

- 1. 缺相、错相保护 = Lack of phase, error phase protection**  
如遇发生缺相或错相，自动扶梯（自动人行道）将自动停止。  
The escalator (moving walk) will be automatically stopped for running in case of phase failure.
- 2. 马达过载保护 = Motor over-load protection**  
电动机过载电流的15%额定自动停止运行。  
The escalator will be automatically stopped running in case the current exceeds the 15% of rated.
- 3. 电气回路保护 = Electrical appliance loop protection**  
提出自动电路短路装置以保护自动扶梯（自动人行道）的电机和电源部分。  
It offers the automatic circuit disconnecting device to protect the circuit and main components of the escalator (moving walk).
- 4. 扶手带入口保护 = Handrail inlet protection**  
当异物卡在扶手带入口处时，自动扶梯（自动人行道）会自动停止运行。  
When foreign matters are jamming in the handrail inlet, the escalator (moving walk) will be automatically stopped for running.
- 5. 梳齿板安全保护装置 = Comb plate safety device**  
当异物卡在梳齿板之间时，自动扶梯（自动人行道）将自动停止运行。  
When foreign matters are jamming into between the comb, the escalator (moving walk) will be automatically stopped for running.
- 6. 梯级驱动链保护装置 = Step sapring protection device**  
当发生梯级有异常的弯曲时，自动扶梯（自动人行道）会在梯级进入踏板前停止运行。  
When there is abnormal step bending, the escalator (moving walk) will be stopped for running before the step entering into the comb plate.
- 7. 驱动链保护装置 = Broken drive-chain safety device**  
当驱动链出现异常断裂时，自动扶梯（自动人行道）将自动停止运行。  
When the drive-chain has been over-stretched or it is broken, the escalator (moving walk) will be automatically stopped for running.

- 8. 梯级链断裂保护 = Broken step chain protection**  
当梯级（踏板）链被过度拉伸或断裂时，自动扶梯（自动人行道）将自动停止运行。  
When the step (tread) chain has been over-stretched or broken, the escalator (moving walk) will be automatically stopped for running.
- 9. 超速保护 = Over-speed protection**  
当自动扶梯（自动人行道）超速，将自动停止运行。  
When there is over-speed to the escalator (moving walk), it will be automatically stopped for running.
- 10. 非操作方向运行保护 = Direction reversed protection**  
当扶梯运行违反了规定的运行方向，自动扶梯（自动人行道）将自动停止运行。  
When it comes into unintentional reversal of the direction of travel, the escalator (moving walk) will be automatically stopped for running.
- 11. 警戒线 = Security line**  
黄色合成纤维警戒线位于自动扶梯梯级的前部和后部，以防止乘客 踏入相邻梯级的边缘区域和踏板之间，在相邻踏板边缘线属于踏板表面（自动人行道踏板可选项属于踏板侧线）。  
The yellow synthetic fiber security line is located in the front position and two sides of the escalator step so that the passengers will not step on the edge of the step or the space between the steps. (The moving walk offers the selective yellow spray-painted security line.)
- 12. 紧急停止按钮 = Emergency stop button**  
当按下该按钮时，自动扶梯（自动人行道）将停止运行。  
When the button has been pressed down, the escalator (moving walk) will be stopped for running.
- 13. 制动保护装置 = Brake protection**  
当制动系统发生故障时，制动装置将通过弹簧力使用制动功能产生制动，使自动扶梯（自动人行道）停止运行。  
When the electric brake fails, stop of supply or it acts any of the safety device the brake function goes into effect by the safety device through the spring resistance action, the escalator (moving walk) stopped for running accordingly.

# Safety devices of HS300 Moving Walk

## HS300人行道安全装置



可选用的安全装置  
Optional safety device

- 14. 检修安全开关 = Safety inspection switch**  
检修保持时，防止扶梯启动的安全装置。  
It has a safety device to prevent from the escalator starting during the inspection and maintenance.
- 15. 脚踏照明 = Step illumination**  
扶梯上下端，扶梯下部装有照明以提醒乘客人注意安全。  
Illumination exists in the upper and lower ends of the escalator, in the lower part of the steps in order to remind the passengers of the safety matters.
- 16. 裙板保护 = Skirt panel protection**  
当异物卡在裙板和踏板之间时，自动扶梯（自动人行道）将自动停止运行。  
When foreign matters has been jammed in between the skirt panel and the step, the escalator (moving walk) will be automatically stopped for running.
- 17. 启动报警装置 = Alarm bell starting device**  
扶梯启动时警铃响起，以提醒乘客安全。  
The alarm bell rings when the escalator starts in order to remind the passengers of the safety matters.
- 18. 扶手带速度监测 = Handrail speed monitor**  
如扶手带速度比标准慢于一定百分比，自动扶梯（自动人行道）将停止运行。  
When the handrail speed versus step is slower than certain percentage, the escalator (moving walk) will be stopped for running.
- 19. 裙板检测 = Skirt panel brash**  
在裙板检测板之间安装有刷子检测鞋子的异物是否卡在裙板。  
It is a optional safety device. The brush that has been installed between the skirt panel and the step will prevent the shoes of passengers from touching the skirt panel.
- 20. 扶手带断裂保护装置 = Control device for handrail breakage**  
当扶手带断裂时，自动扶梯将停止运行。  
When the handrail is broken, the escalator will be automatically stopped for running.
- 21. 下部集水排水 = Lower machine room drain**  
当下部机房排水管道堵塞时，自动扶梯将在运行（室外型）或停止运行（室内型）时启动排水系统。  
When it exceeds the standard water level in the lower machine room, the automatic drain system will start accordingly. (Outdoor type)
- 22. 附加制动器 = Auxiliary brake**  
驱动链断裂或制动失灵的防止扶梯下滑确保人员安全（H > 6m时必须配备）。  
It prevents from the escalator slide and ensures the passengers security in case of the drive chain breakage or the out-of-order of the brake. (It should be equipped with the emergency brake when H>6m)



# 功能

<b>静电保护</b> 消除梯级（踏板）在运行产生的静电	<b>Static electricity protection</b> Remove static electricity raised from running of steps
<b>急停保护</b> 当需要紧急停车时，按下急停开关起保护	<b>Emergency stop button</b> Push the emergency stop button to stop the escalator / passenger Conveyor against emergency happen
<b>围裙保护</b> 当异物夹入梯级（踏板）与围裙之间起保护	<b>Skirting protection</b> Protection against risk of foreign matters being jammed into clearance between steps and skirting
<b>扶手入口安全保护</b> 当扶手入口有异物夹住时起保护	<b>Handrail entry safety protection</b> Protection against risk of foreign matters being jammed into handrail entry
<b>驱动连接保护</b> 当驱动链断裂或过长的起保护	<b>Main drive chains safety protection</b> Protection against risk of drive chains being breakage or over long
<b>超速保护</b> 当速度高于额定速度的20%时起作用	<b>Over-speed protection</b> Protection against risk of speed being over 20% of rated speed
<b>欠速保护</b> 当速度低于额定速度的80%时起作用	<b>Under-speed protection</b> Protection against risk of speed less than 80% of rated speed
<b>非操作逆转保护</b> 当梯级和扶手的运行方向与指定方向相反的起保护	<b>Un-intentional reversal protection</b> Protection against risk of unintentional reversal protection
<b>缺、错相保护</b> 当动力电源缺相或错相时起保护	<b>Lack of phase, error phase protection</b> Protection against risk of phase failure
<b>短路保护</b> 当电力回路短路时起保护	<b>Short circuit protection</b> Protection against risk of short circuit
<b>过载保护</b> 当电机持续过载时起保护	<b>Over-load protection</b> Protection against risk of motor continually over-load
<b>梯级（踏板）下陷保护</b> 当梯级（踏板）损坏而下陷时起保护	<b>Step sagging protection</b> Protection against risk of steps being breakage and sagging
<b>梯级（踏板）链断保护</b> 当梯级（踏板）链断裂或过长的起保护	<b>Step chains safety protection</b> Protection against risk of step chains being breakage or over long
<b>梳齿安全保护</b> 当异物夹入梳齿的起保护	<b>Comb safety guard</b> Protection against risk of foreign matters being trapped into comb teeth

# Logical arrangement systematic layout 合理的布置、科学的规划



◎ 单排列 Single

这种布置方式占地面积小，扶梯放置位置灵活，它只能实现客流单向连续流动，多适用于小型商场和卖场。  
Such layout has the advantages of small covering area, flexible escalator arrangement. It can only fulfill one-way intermittent flow of the passengers. It is mostly suitable for small-size shopping places.



◎ 连续排列 Scissored

这种布置方式比单排布置所需要的空间大一些，它能实现客流的单向连续流动，多适用于中、小型百货商场。  
Such layout is a bit larger than that from the irregular layout. It can fulfill one-way continuous flow of the passengers. It is mostly suitable for small and medium department stores.



◎ 平行连续排列 Parallel

这种布置方式主要适用于客流量较大的大型商场和公共交通场所，它能实现较大客流量的双向连续流动；在客流出现单边高峰时，可以按照客流需要调整部分扶梯的运行方向以满足高峰流量。  
因为无需内侧挡板，这种方式具有一定的经济性。

Such layout is mainly fit for large passenger flow shopping centers and public traffic areas. It can fulfill two-way continuous flow of large passenger flows. When one-way peak hour occurs in the passenger flow, we can adjust the travel direction of partial escalators in order to meet the requirements of rush-hour flows requirements. Without an internal retaining plate, such mode is quite economical.

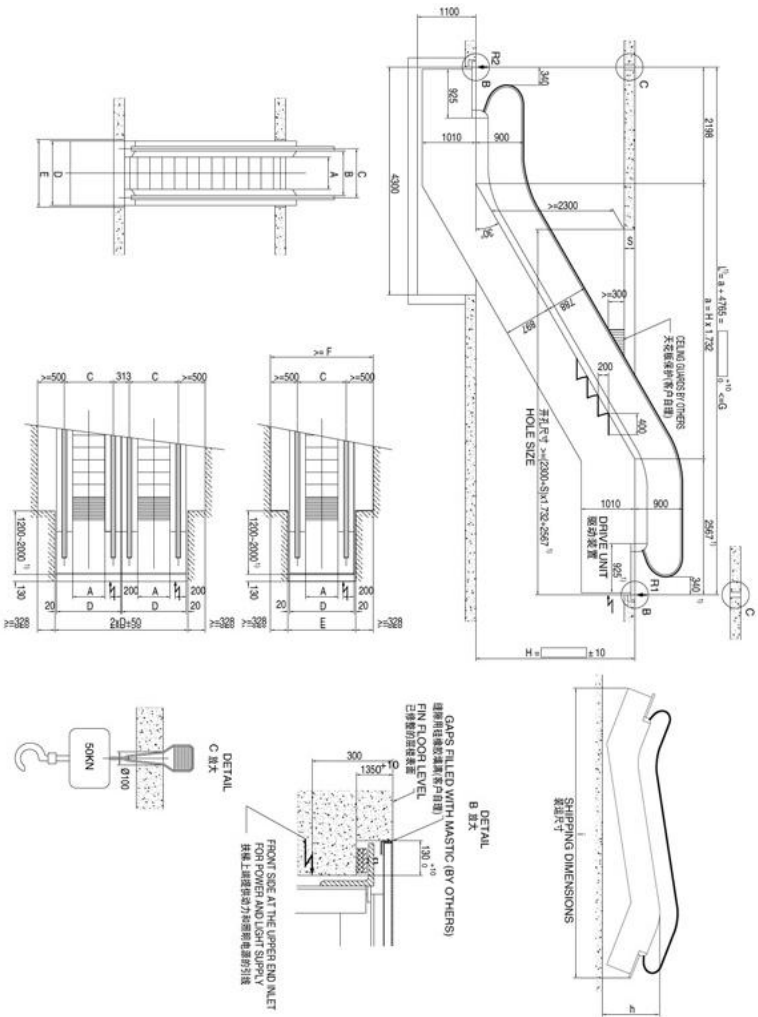


◎ 十字交叉排列 Cross

这种布置方式主要适用于大型百货商场和公共建筑，这些地方的楼层之间的运送次数应保持尽可能地少。  
Such layout is mainly suitable for large-size department stores and public constructions. The conveying times between these floors shall be minimized as far as possible.

# HS200-30K 商用型自动扶梯土建布置图

## Floor plan of HS200-30K Commercial Escalator



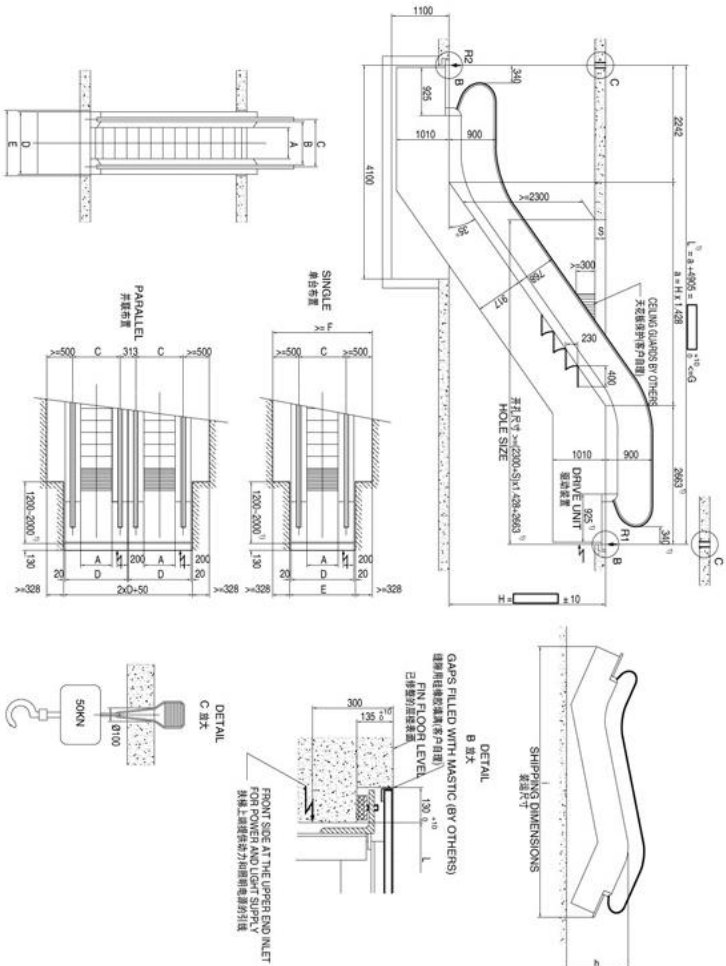
型号 Type	提升高度 Rise	重量 Weight			承载 Support Loads			电机功率 Power KW	运输尺寸 Transport size
		KN	R1	R2	KN	R1	R2		
30-60K 4900 man/hour	H	3000	57	46	41	41	41	2172	11177
	KN	3500	60	49	44	44	44	2217	12165
		4000	63	52	47	47	47	2254	13155
30-80K 6750 man/hour	H	3000	67	56	50	50	50	2289	14146
	KN	5000	70	59	53	53	53	2309	15138
		5500	74	62	56	56	56	2348	16131
30-100K 9000 man/hour	H	3000	59	52	47	47	47	2066	10788
	KN	3500	63	56	50	50	50	2101	11778
		4000	67	60	54	54	54	2130	12769

梯级宽度 Step width	1000mm	800mm	600mm
A: 梯级宽度	1000	800	600
B: 扶手带间宽度	1157	957	757
C: 扶手带中心距	1237	1037	837
D: 扶级高度	1540	1340	1140
E: 井道宽度	1580	1380	1180
F: 最小间距	2236	2036	1836
G: 最大间距	16000	17200	18900

1. 若L > G, 需增加中间支撑。
  2. 若梯级宽度为600mm, 上部桁架需增加417mm
  3. 详细电机功率参数请咨询技术部。
1. If L > G, an intermediate support is required, please consult.  
2. If step width is 600mm, upper truss shall increase 417mm.  
3. Detailed motor power parameters may check with our technical department.

# HS200-35K 商用型自动扶梯土建布置图

## Floor plan of HS200-35K Commercial Escalator



型号 Type	提升高度 Rise	重量 Weight			承载 Support Loads			电机功率 Power KW	运输尺寸 Transport size
		KN	R1	R2	KN	R1	R2		
35-60K 4900 man/hour	H	3000	54	43	39	39	39	2291	10458
	KN	3500	57	46	41	41	41	2345	11309
		4000	60	49	44	44	44	2389	12163
35-80K 6750 man/hour	H	3000	64	52	46	46	46	2455	13019
	KN	5000	67	54	49	49	49	2481	14377
		5500	70	57	51	51	51	2503	15568
35-100K 9000 man/hour	H	3000	56	49	44	44	44	2177	10073
	KN	3500	60	52	47	47	47	2219	10926
		4000	63	56	50	50	50	2263	11782

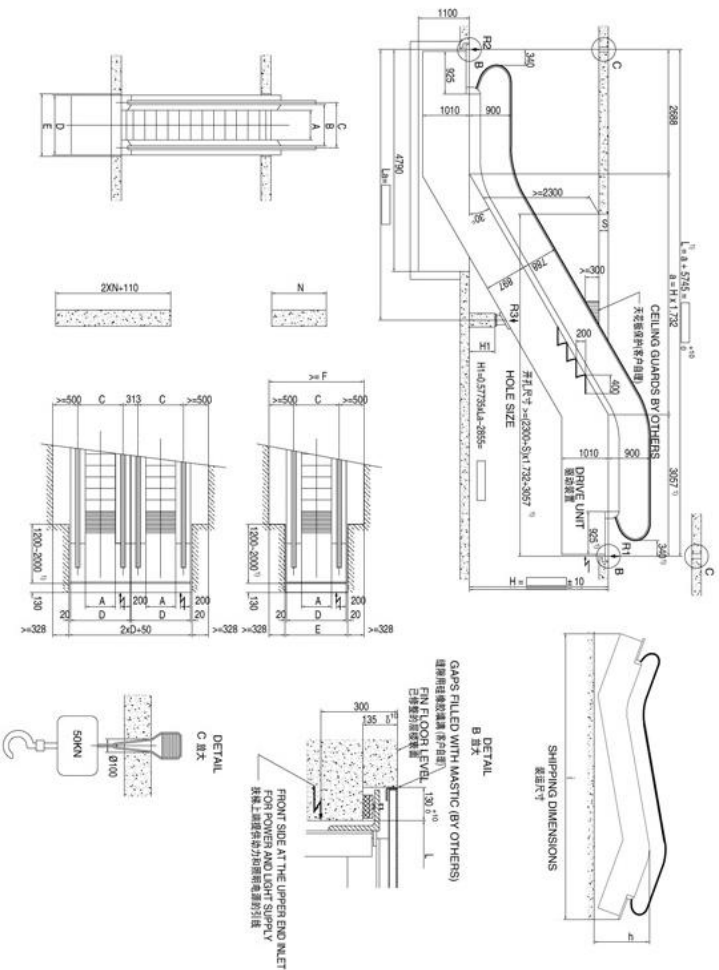
梯级宽度 Step width	1000mm	800mm	600mm
A: 梯级宽度	1000	800	600
B: 扶手带间宽度	1157	957	757
C: 扶手带中心距	1237	1037	837
D: 扶级高度	1540	1340	1140
E: 井道宽度	1580	1380	1180
F: 最小间距	2236	2036	1836
G: 最大间距	16000	17200	18900

1. 若L > G, 需增加中间支撑。
  2. 若梯级宽度为600mm, 上部桁架需增加417mm
  3. 详细电机功率参数请咨询技术部。
1. If L > G, an intermediate support is required, please consult.  
2. If step width is 600mm, upper truss shall increase 417mm.  
3. Detailed motor power parameters may check with our technical department.



# HS200中高度商用型自动扶梯土建图

The Construction Layout Drawing of HS200 Medium Height Commercial Escalator



型号 Type	提升高度 Rise	重量 Weight KN	电机功率 P Kw V=0.5m/s
30-60M 6750 man/hour	6000	89	11
	6500	95	
	7000	99	
	7500	102	
	8000	106	
90-100M 9000 man/hour	8500	115	
	9000	118	
	9500	122	
	10000	126	
	10500	130	

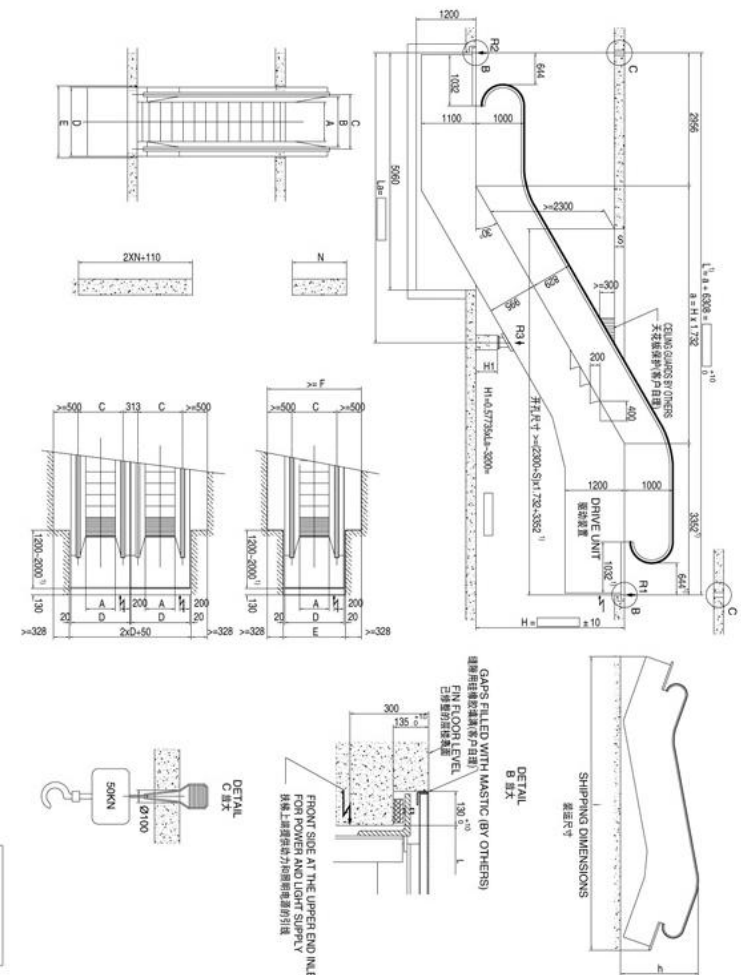
尺寸单位为mm, 个别尺寸可能有所修改  
mm size units, individual size may be revised

梯级宽度 Step width	1000mm	800mm
A: 梯级宽度	1000	800
B: 扶手带间高度	1157	957
C: 扶手带中心距	1237	1037
D: 扶梯宽度	1540	1340
E: 井道宽度	1580	1380
F: 最大间距	2226	2036
G: 最大跨距	16000	17200
N: 支撑宽度	1500	1300

1. 若L > G, 需增加中间支撑。
  2. 若为双驱动, 梯级宽度为600mm, 上部桁架需增加417mm
  3. 详细电机功率参数请咨询技术部
1. If L > G, an intermediate support is required, please consult. 2. With a double drive and Step width of 600mm, the truss must be extended by 417mm.
3. Detailed motor power parameters may check with our technical department.

# HS200公共交通型不锈钢斜扶手自动扶梯土建图

The Construction Layout Drawing of HS200 Public Traffic Type Stainless Steel Slant Handrail Escalator



型号 Type	高度 H	重量 KN	电机功率 V=0.5m/s V=0.65m/s	型号	高度 H	重量 KN	电机功率 V=0.5m/s V=0.65m/s
30-60M 6750man/hour	3000	80	8Kw	3000	85	8Kw	11Kw
	3500	85	8Kw	3500	89	8Kw	11Kw
	4000	92	8Kw	4000	93	11Kw	11Kw
	4500	99	8Kw	4500	97	11Kw	11Kw
	5000	96	11Kw	5000	101	11Kw	15Kw
90-100M 9000man/hour	6000	103	11Kw	6000	109	15Kw	18Kw
	6500	110	11Kw	6500	115	15Kw	18Kw
	7000	114	15Kw	7000	119	15Kw	21Kw
	7500	117	15Kw	7500	123	21Kw	21Kw
	8000	121	15Kw	8000	133	21Kw	21Kw

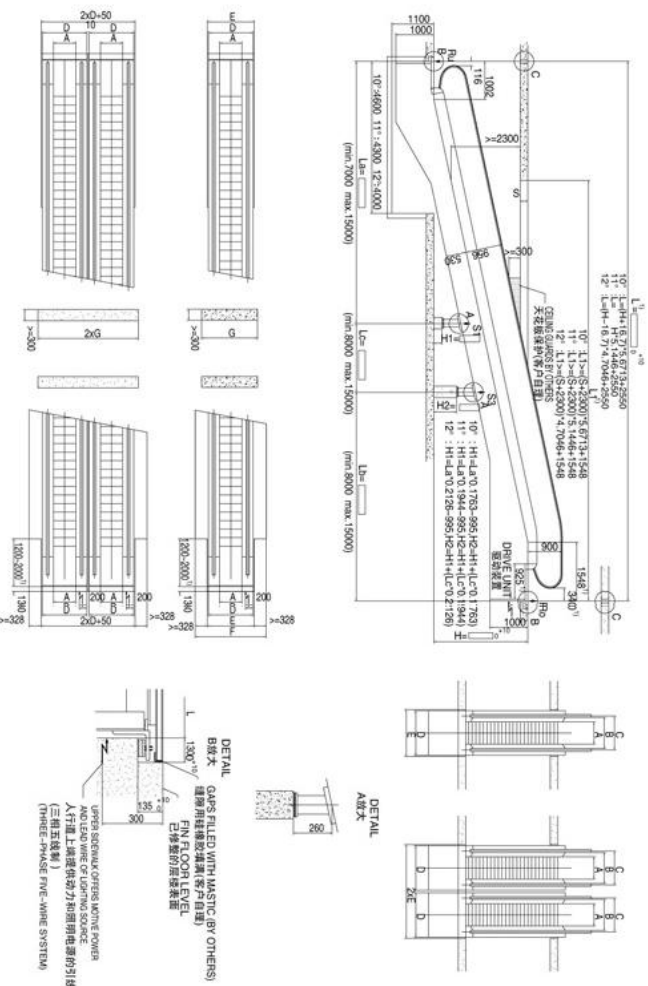
尺寸单位为mm, 个别尺寸可能有所修改  
mm size units, individual size may be revised

梯级宽度 Step width	1000mm	800mm
A: 梯级宽度	1000	800
B: 扶手带间高度	1157	957
C: 扶手带中心距	1237	1037
D: 扶梯宽度	1570	1370
E: 井道宽度	1610	1410
F: 最大间距	2226	2036
G: 最大跨距	16000	17200
N: 支撑宽度	1500	1300

1. 若L > G, 需增加中间支撑。
  2. 若为双驱动, 梯级宽度为600mm, 上部桁架需增加417mm
  3. 详细电机功率参数请咨询技术部
1. If L > G, an intermediate support is required, please consult. 2. With a double drive and Step width of 600mm, the truss must be extended by 417mm.
3. Detailed motor power parameters may check with our technical department.

# HS300-I 人行道土建图(10-12)度

## HS300-I Moving Walk Layout drawing (10° ~ 12°)



倾斜角 Inclination Angle	提升高度 Rise	中间支撑 Mid-support			La	Lb	Lc
		目 No.	至 To	S1			
10°	1273	2154	-	-	-	-	-
	2155	3388	1	-	7000	L-7000	-
	3389	4799	1	-	L-15000	15000	-
11°	1423	2394	-	-	-	-	-
	2395	3754	1	-	7000	L-7000	-
	3755	5309	1	-	L-15000	15000	-
12°	1572	2634	-	-	-	-	-
	2635	4122	1	-	7000	L-7000	-
	4123	5822	1	-	L-15000	15000	-
	5823	6000	1	1	7000	15000	L-22000

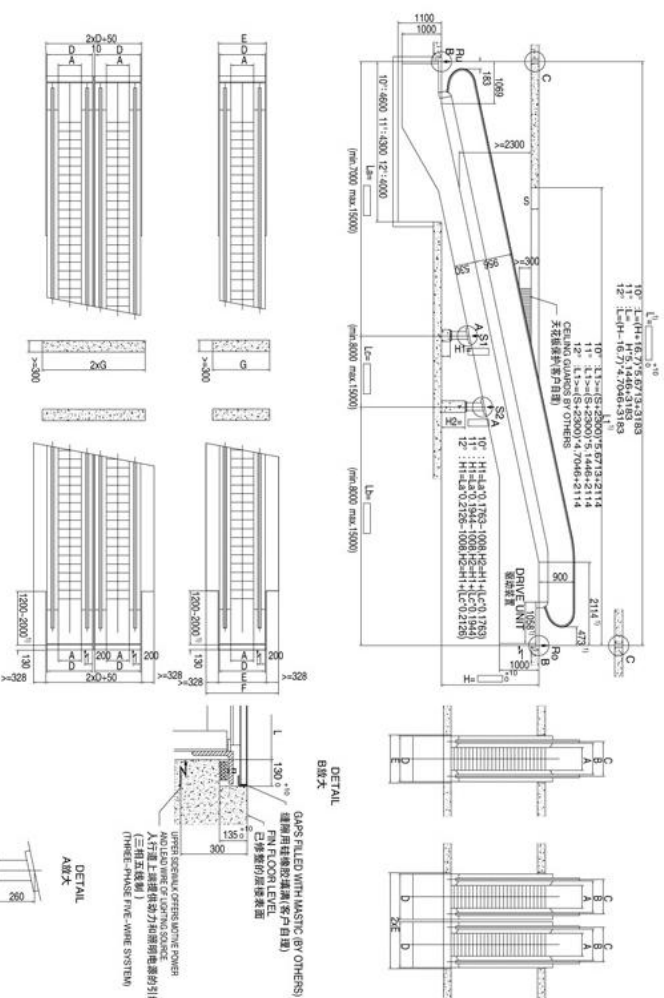
支撑力参数 Supported by /mm	q	M	N
YSS80	0.0039	9.5	4.5
YSS100	0.0045	11	5

支撑力参数 Supported by /mm	q	M	N
YSS80	0.0039	9.5	4.5
YSS100	0.0045	11	5

1. 使用节距为133mm踏板
  2. 若为双驱动，上部桁架需增加417mm
  3. 详细电机功率参数请咨询技术部
1. Use the tread with 133mm pitch.  
2. Upper truss shall increase 417mm for double-drive.  
3. Detailed motor power parameters may check with our technical department.

# HS300-II 人行道土建图(10-12)度

## HS300-II Moving Walk Layout drawing (10° ~ 12°)



倾斜角 Inclination Angle	提升高度 Rise	中间支撑 Mid-support			La	Lb	Lc
		目 No.	至 To	S1			
10°	1273	2154	-	-	-	-	-
	2155	3388	1	-	7000	L-7000	-
	3389	4799	1	-	L-15000	15000	-
11°	1423	2394	-	-	-	-	-
	2395	3754	1	-	7000	L-7000	-
	3755	5309	1	-	L-15000	15000	-
12°	1572	2634	-	-	-	-	-
	2635	4122	1	-	7000	L-7000	-
	4123	5822	1	-	L-15000	15000	-
	5823	6000	1	1	7000	15000	L-22000

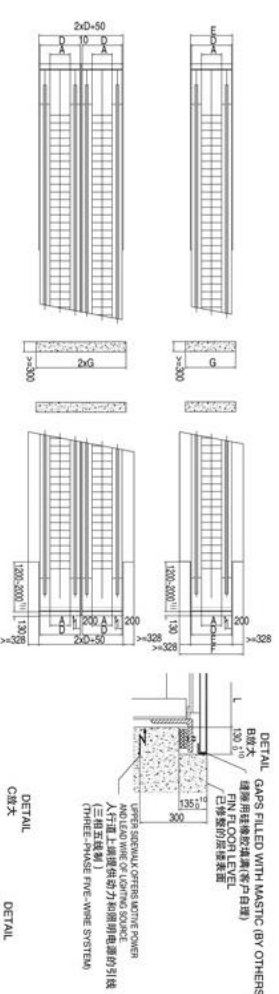
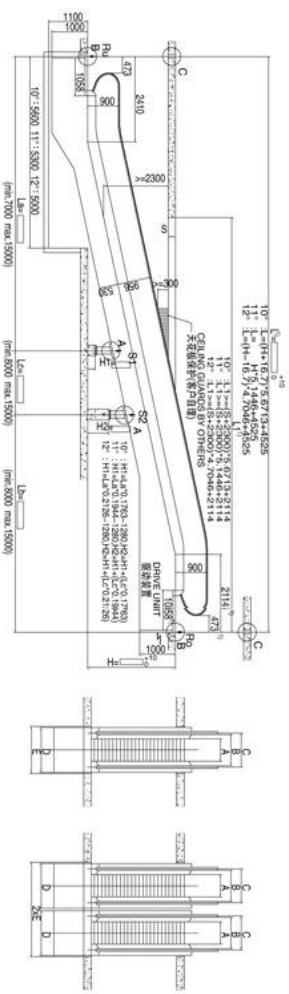
支撑力参数 Supported by /mm	q	M	N
YSS80	0.0039	9.5	4.5
YSS100	0.0045	11	5

支撑力参数 Supported by /mm	q	M	N
YSS80	0.0039	9.5	4.5
YSS100	0.0045	11	5

1. 使用节距为266mm踏板
  2. 若为双驱动，上部桁架需增加417mm
  3. 详细电机功率参数请咨询技术部
1. Use the tread with 266mm pitch.  
2. Upper truss shall increase 417mm for double-drive.  
3. Detailed motor power parameters may check with our technical department.

# HS300-III双圆弧人行道土建图(10-12)度

## HS300-III Double-Arc Moving Walk Construction Layout drawing (10° ~ 12°)

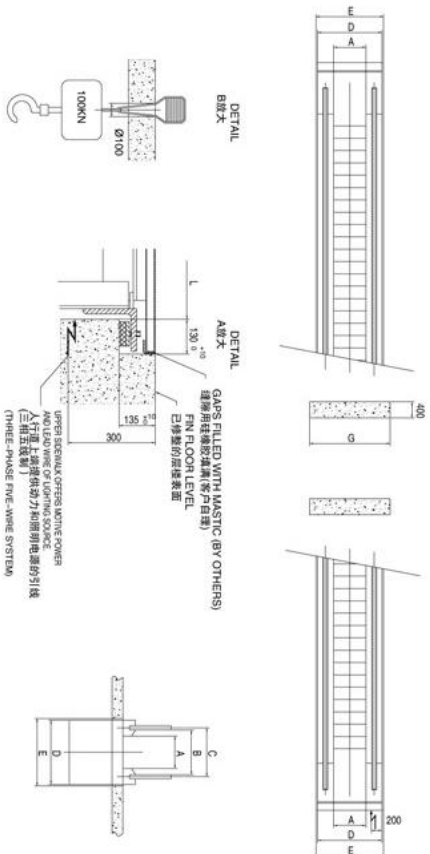


支撑力参数	q	M	N
Supported by YSS80	0.0039	9.5	4.5
YSS100	0.0045	11	5

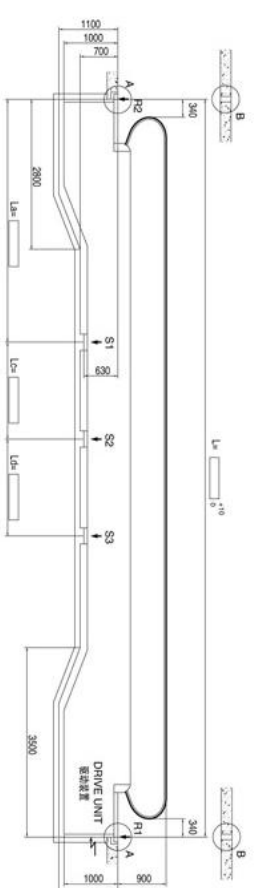
YSS80	YSS100
A 800	1000
B 957	1157
C 1037	1237
D 1340	1540
E 1380	1580
F 2036	2236
G 1300	1500

1. 若为双驱动，上部桁架需增加417mm
  2. Upport truss shall increase 417mm for double-drive
1. Upper truss shall increase 417mm for double-drive.  
2. Detailed motor power parameters may check with our technical department.

倾角 Height	提升高度 Rise		中间支撑 Mid-support		Lc
	自	至	S1	S2	
10°	1273	2154	-	-	-
	2155	3388	1	1	7000
	3389	4799	1	1	L-7000
	4800	6000	1	1	L-15000
	6000	7000	1	1	15000
11°	1423	2394	-	-	-
	2395	3754	1	1	7000
	3755	5309	1	1	L-7000
	5310	6000	1	1	L-15000
	6000	7000	1	1	15000
12°	1572	2634	-	-	-
	2635	4122	1	1	7000
	4123	5822	1	1	L-7000
	5823	6000	1	1	L-15000
	6000	7000	1	1	15000



YSH80	YSH100
A 800	1000
B 957	1157
C 1037	1237
D 1340	1540
E 1380	1580
F 2036	2236
G 1300	1500

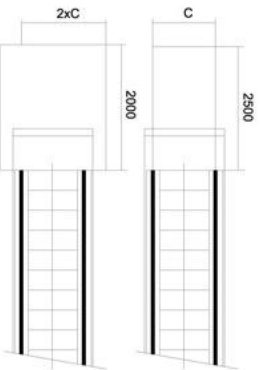


# HS300人行道土建图(0)度

## HS300 Moving Walk Construction Layout drawing (0°)

# 自动扶梯/人行道土建安装须知

## Escalator/Moving Walk installation notice



- 除了确保合同土建的各尺寸和要求，以下的要求也须达到。
- 为了确保扶梯和人行道的使用安全，自由空间必须在各层站处提供足够大的空间。（参见左页小尺寸图）
- C=扶手带中心宽度

### ■ Besides complying with the drawing of the contract, attention should also be drawn to the following

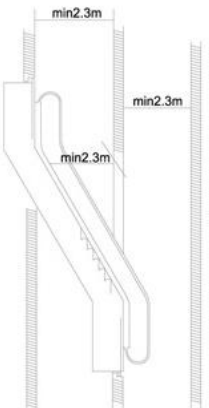
- To ensure the safety of the escalator and Moving Walk, free space should be large enough in the landing area. (See the minimum size left)
- C= the distance of the handrails

### ■ 顶空安全距离

- 在梯阶/踏板上的任意点上，至少有2.3米不受任何障碍的安全距离。
- 特别注意！如果一台扶梯上的另一台扶梯的提升高度<3.3米，就不可能达到2.3米的顶空安全距离。

### ● Vertical safety distance

- There should be at least 2.3m upside safety distance starting upward from the step board.
- Notice: if the vertical rise of one escalator, which is installed above another one, is less than 3.3m, the upside safety distance can not reach 2.3m.

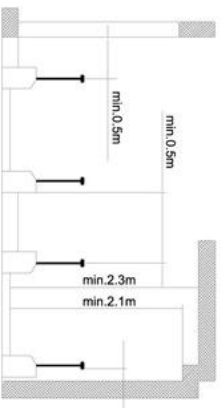


### ■ 扶梯（人行道）安装必须保证必须的水平安全距离

- 扶手带外边缘至墙体或其他障碍物的水平安全距离必需大于80mm。
- 梯级/踏板区上方垂直安全距离必需大于2.3m。
- 扶手带区上方垂直安全距离必需大于2.1m。
- 对接面开孔或扶梯/人行道交叉布置，扶手带中心到障碍物的水平安全距离必需大于0.5m。
- 如未达到要求，需设置专门的防护装置和防撞挡板。
- 专门的防护装置和防撞挡板，可向汉森电梯公司咨询。

### ● Escalators and Moving Walk horizontal safety distance

- The horizontal distance between the handrail edge and the wall or other objects should be more than 80mm.
- The vertical distance above the step board should be more than 2.3m.
- The vertical distance above the handrail space should be more than 2.1m.
- In case of floor spaces or the cross layout of escalators and Moving Walk, the safety distance between the handrail center and the object should be more than 0.5m.
- If the above-mentioned requirements cannot be met, a special protection device and a bumper rail should be used.
- For further information, please contact Hanson Elevator.



汉森在国内各主要城市均设分支机构，将为当地的客户提供快捷的服务，包括零件的供应以及响应时间。

Hanson establishes the brand institutes in various major cities in China. It will furnish the local clients with the prompt service, including the spare supply and the responsive time.

汉森为紧急排除故障而特设的24小时客户热线，将在第一时间为您提供服务。

Hanson sets 24-hour customer hotline in order to urgently remove the trouble. It will most promptly furnish you with the best service.

汉森定期能员对您的设备的运行状态进行检测，将使您的设备得到最为专业的保养。

Hanson regularly assign the staff to test your equipment's travel conditions so that your device can get the most professional maintenance.

